



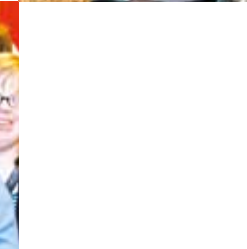
© Jean-Claude Ernst, Luxpress

International Solidarity



© Guy Jallay, Luxemburger Wort

The Foundation needs your support!



International solidarity is one of the Foundation's fields of action; children in distress are the primary beneficiaries.

Since the beginning of 2010, at the initiative of the Grand Duchess, 'Eminent Advocate for Children' (UNICEF) and 'Goodwill Ambassador' (UNESCO), the international aid of the Foundation has been mostly concentrated on a vast programme based in **Burundi**. To this end, the so-called 'Projet de la Main Tendue à l'enfance' was launched with the support of Burundians and Luxembourgish partners.

The project in Burundi aims to release minors from prison and offer them support (making them feel valuable and providing medical and psycho-social assistance, scholastic or professional training, securing lodging . . .) all while reintegrating them within local society.

You can support the activities of the Grand Duke Henri and the Grand Duchess Maria Teresa Foundation by sending a donation to the following bank account:

CCPL LU33 1111 0001 6669 0000

If you would like to support a specific action, please indicate one of the following:

- **Social assistance** – Luxembourg
- **Assistance to people with physical, psychological or social difficulties** – Luxembourg
- **'Projet de la Main Tendue à l'enfance'** – Burundi

Donations are tax deductible under the rules established by law.

 www.twitter.com/fondgrandducale
 www.facebook.com/fondgrandducale

8, an der Sang ■ L-7739 Colmar-Berg
T +352 31 70 31-1
F +352 31 70 31-40
info@fondation-grand-ducale.lu

www.fondation-grand-ducale.lu



Live together
solidarity
integration
dignity





© Lola Velasco, Grand Ducal Court

Serving the idea of 'Living Together' for 30 years

The Grand Duke Henri and the Grand Duchess Maria Teresa Foundation has **three objectives**:

- To respond to requests for assistance and help made to Their Royal Highnesses the Grand Duke and the Grand Duchess by residents **of Luxembourg** who were not able to have their requests satisfied through the public institutions within the existing legal or budgetary framework or when public assistance can not be given quickly enough to meet urgent needs.
- To allow people **resident within the territory of the Grand Duchy or abroad** who have a physical, psychological, mental or social disability to live with self-respect and human dignity and to facilitate their integration into society, notably through scholastic or professional training and by including them in social and cultural activities.
- To contribute financially to development projects and humanitarian aid in **other countries**.



© Jean-Claude Ernst, Luxpress

The areas of activity in Luxembourg

Solidarity, integration and respect for human dignity are the three principals guiding the Grand Duke Henri and the Grand Duchess Maria Teresa Foundation in its activities.

The Foundation was created in 2004 following the merger of the 'Grand Duke and Grand Duchess Foundation' with the 'Prince Henri - Princess Maria Teresa Foundation'. Created in 1981 on the occasion of the marriage of the royal couple, the Prince Henri - Princess Maria Teresa Foundation was essentially dedicated to supporting people with specific needs in order to facilitate their integration into society.

In 2001, as part of the events marking the Grand Duke Henri's accession to the throne, a new foundation was born: the "Grand Duke and the Grand Duchess Foundation". Enlarging the scope of its actions, this foundation has been given the mission of supporting people facing material challenges and difficulties in Luxembourg or in disadvantaged regions of the world.

Since 2004, the merger of these two foundations has allowed them to pool their resources and their areas of intervention so as to become even more efficient in helping people in distress.



© Grand Ducal Court

The Foundation's three objectives

In Luxembourg, the Foundation is active in several areas:

- **Social assistance**: there are numerous calls for emergency assistance made directly to TTRRHH the Grand Duke and the Grand Duchess or to the Foundation by individuals in distress. After a thorough examination of each case with the help of experts, the Foundation gives an appropriate response to the requests submitted.
- **The physically or psychologically challenged**: since the creation of the 'Prince Henri - Princess Maria Teresa Foundation', the predecessor of the current Foundation, physically or psychological challenged individuals have been some of the primary beneficiaries of assistance at the national level. The Foundation responds both to requests made by other associations working in this field as well as to individuals facing these types of challenges.
- **Children**: for many years, the Grand Duchess has worked tirelessly to secure social rights and a good education for children, both in Luxembourg and abroad.